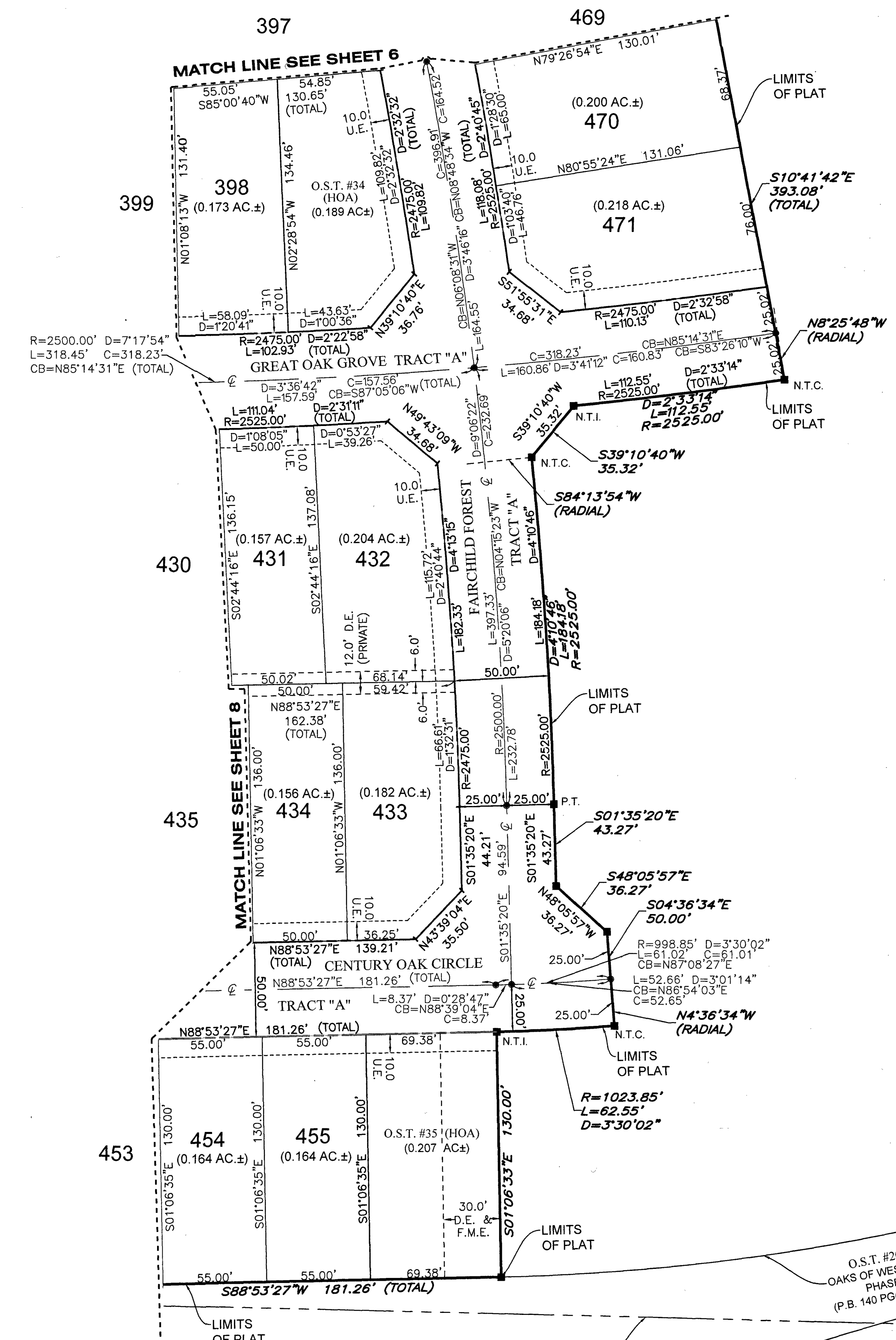
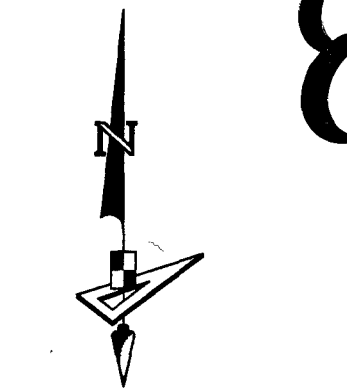


OAKS OF WESTLAKE - PHASE II

A SUBDIVISION IN SECTIONS 5 AND 8, TOWNSHIP 43 SOUTH, RANGE 41 EAST, CITY OF WESTLAKE, PALM BEACH COUNTY, FLORIDA, BEING A REPLAT OF A PORTION OF TRACT "U", OAKS OF WESTLAKE - PHASE I, PLAT BOOK 140, PAGES 60 - 79, INCLUSIVE, PUBLIC RECORDS OF PALM BEACH COUNTY, FLORIDA.

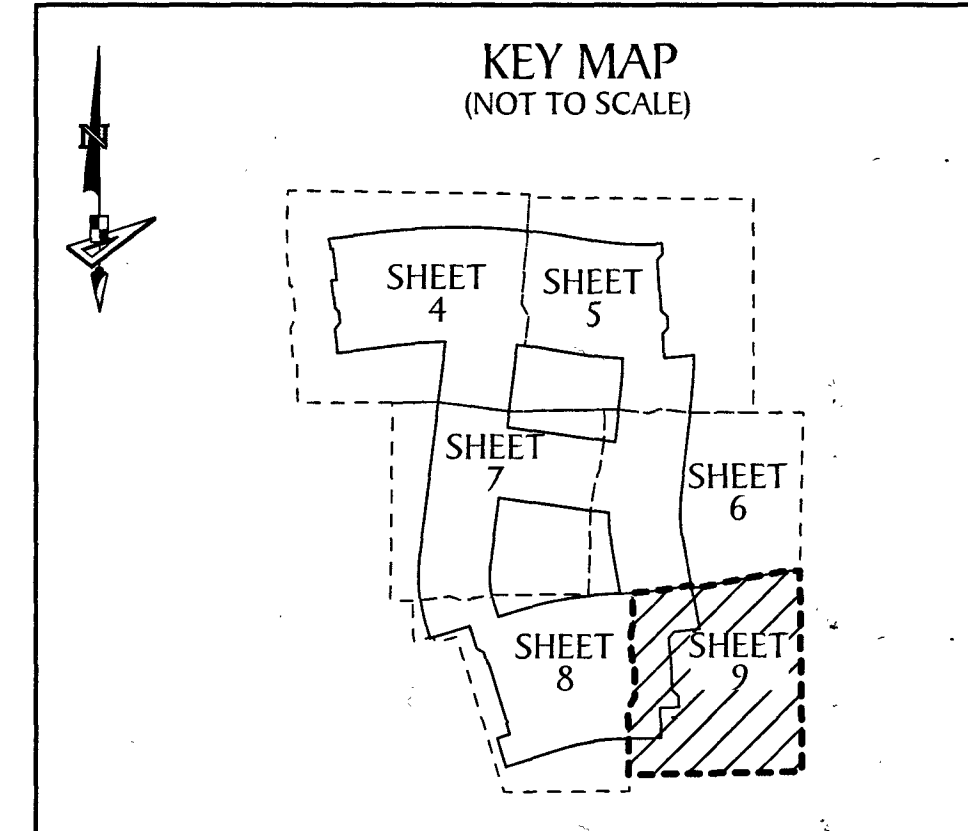


TRACT "U"
(MINTO)
RESERVED FOR FUTURE
DEVELOPMENT
OAKS OF WESTLAKE - PHASE I
(P.B. 140, PG(s). 60-79)



SCALE 1" = 40'
0 20 40 80

SEE NOTE ON SHEET 2
FOR BASIS OF BEARINGS



LEGEND

- P.O.B. ----- POINT OF BEGINNING
- P.O.C. ----- POINT OF COMMENCEMENT
- P.B. ----- PLAT BOOK
- D.B. ----- DEED BOOK
- O.R./O.R.B. ----- OFFICIAL RECORDS BOOK
- PG./PG(s) ----- PAGE(S)
- NAD ----- NORTH AMERICAN DATUM
- W.M.T. ----- WATER MANAGEMENT TRACT
- O.S.T. ----- OPEN SPACE TRACT
- P.B.C. ----- PALM BEACH COUNTY
- U.E. ----- UTILITY EASEMENT
- D.E. ----- DRAINAGE EASEMENT
- F.M.E. ----- FORCE MAIN EASEMENT
- L.M.A.E. ----- LAKE MAINTENANCE ACCESS EASEMENT
- 5-43-41 ----- SECTION-TOWNSHIP-RANGE
- R ----- RADIUS
- L ----- ARC LENGTH
- D ----- DELTA ANGLE
- CB ----- CHORD BEARING
- C ----- CHORD
- N.T.I. ----- NON-TANGENT INTERSECTION
- N.T.C. ----- NON-TANGENT CURVATURE
- P.C. ----- POINT OF CURVATURE
- P.T. ----- POINT OF TANGENCY
- C.C. ----- COMPOUND CURVATURE
- R.C. ----- REVERSE CURVATURE
- R.I. ----- RADIAL INTERSECTION
- R/W ----- RIGHT-OF-WAY
- Ⓞ ----- CENTERLINE OF ROAD
- (R) ----- RADIAL
- (NR) ----- NON-RADIAL
- AC±/AC.± ----- ACRES
- HOA ----- HOMEOWNERS ASSOCIATION
- SID/S.I.D. ----- SEMINOLE IMPROVEMENT DISTRICT
- PRM ----- PERMANENT REFERENCE MONUMENT
- ----- PERMANENT CONTROL POINT
- ----- FOUND PERMANENT REFERENCE MONUMENT "PRM LB 7768"
- ----- SET 1/2" IRON ROD WITH PRM CAP STAMPED "PRM LB 7768"

NOTE:
ALL LINES THAT INTERSECT A CURVE THAT ARE NOT LABELED
NON-RADIAL (NR) ARE RADIAL.

GeoPoint
Surveying, Inc.

1720 East Tiffany Drive Phone: (561) 444-2720
Suite 201 www.geopointsurvey.com
Mangonia Park, FL 33407 Licensed Business Number LB 7768

SHEET 9 OF 9 SHEETS